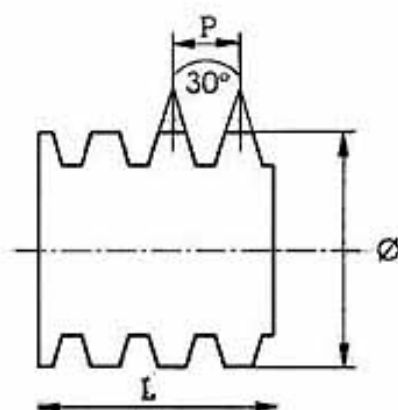


**VITE TRAPEZOIDALI RULLATE
UNI ISO 2901 IN ACCIAIO**

**ROLLED TRAPEZOIDAL
UNI ISO 2901 STEEL SCREWS**

Ø VITE	PASSO TPN	CARICO MASSIMO
12	3	(N) 14394
14	4	(N) 20141
16	4	(N) 26555
18	4	(N) 34255
20	4	(N) 38581
22	5	(N) 47517
25	5	(N) 63048
28	5	(N) 79087
30	6	(N) 93359
35	6	(N) 134696
40	7	(N) 154324
45	8	(N) 181025
50	8	(N) 241131
55	9	(N) 299654
60	9	(N) 359855

1 N = 0,098 kg



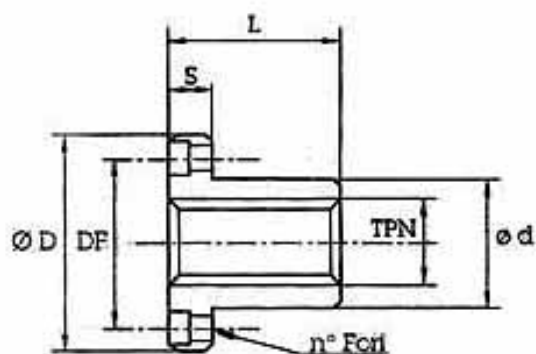
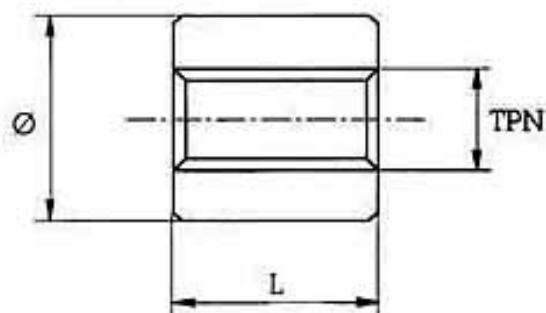
Ø = DIAMETRO ESTERNO VITE
P = PASSO
L = LUNGHEZZA (fino a 6 metri)

Ø = EXTERNAL DIAMETER OF THE SCREW
P = PITCH
L = LENGHT (up to 6 meters)

**MATERIALE STANDARD DESTRO E SINISTRO
STANDARD LEFT AND RIGHT-HAND**

TPN	PASSO TPN	DIMENSIONI Ø L.
12	3	36 x 36
14	4	36 x 36
16	4	36 x 36
18	4	36 x 36
20	4	40 x 40
22	5	40 x 40
25	5	45 x 45
28	5	45 x 45
30	6	50 x 50
35	6	55 x 55
40	7	60 x 60
45	8	65 x 65
50	8	70 x 70
55	9	80 x 80
60	9	80 x 80

CHIOCCIOLE CILINDRICHE TRAPEZOIDALI
UNI ISO 2901 IN BRONZO IND. O IN ACCIAIO
TRAPEZOIDAL LEAD-NUTS
UNI ISO 2901 IN IND. BRONZE OR IN STEEL



CHIOCCIOLE TRAPEZOIDALI FLANGIATE
FLANGED TRAPEZOIDAL LEAD-NUTS

TPN	12	14	16	18	20	22	25	28	30	35	40	45	50	55	60
PASSO	3	4	4	4	4	5	5	5	6	6	7	8	8	9	9
Ø d	18	20	22	25	30	30	35	40	40	50	55	55	65	70	75
Ø D	37	42	45	48	52	52	62	68	68	78	84	90	100	120	120
L	22	25	30	35	40	40	45	50	50	60	65	65	80	80	100
S	8	10	10	10	10	10	12	12	12	12	12	15	15	18	18
DF	26	30	32	35	40	40	48	53	53	63	68	72	80	95	95
FISSAGGIO	M4	M5	M5	M5	M5	M5	M6	M6	M6	M6	M6	M8	M8	M10	M10
N. FORI	4	4	4	4	5	5	5	5	5	6	6	6	6	6	6